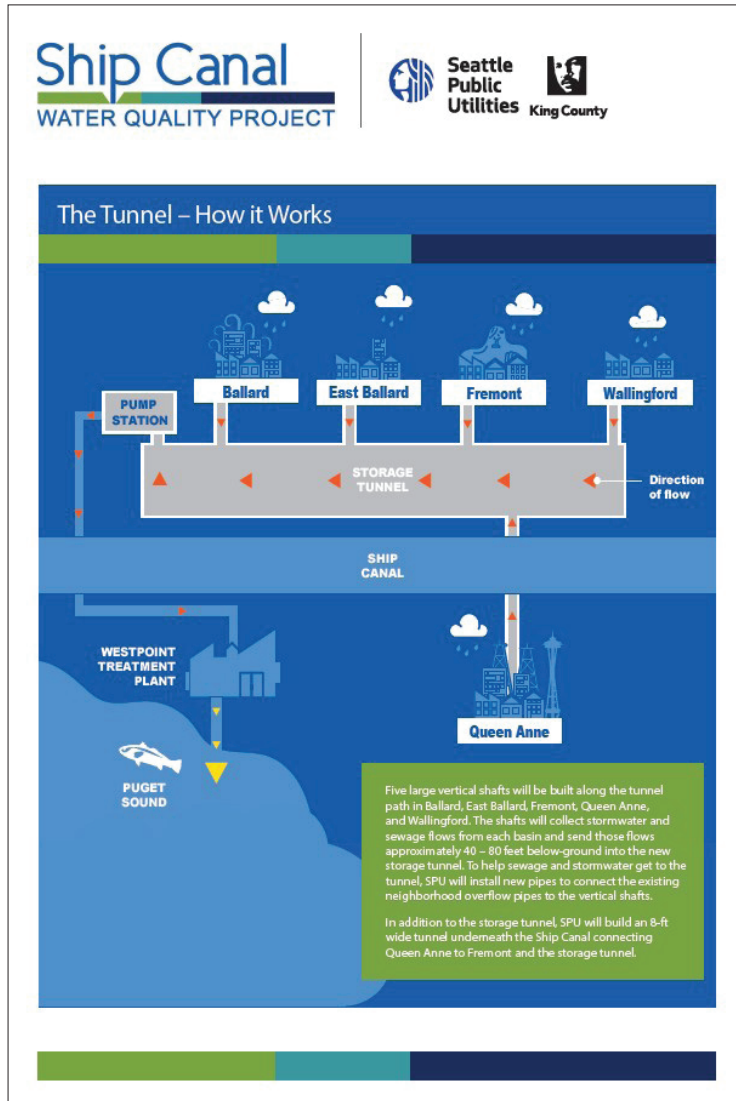


Ship Canal Water Quality Project

SEATTLE PUBLIC UTILITIES



Displays

Ship Canal WATER QUALITY PROJECT

Project Overview

Seattle Public Utilities and King County Wastewater Treatment Division are building an underground storage tunnel to significantly reduce the amount of polluted stormwater and sewage that flows into the Lake Washington Ship Canal, Salmon Bay, and Lake Union from our sewer system.

Project areas: Ballard, East Ballard, Fremont, Queen Anne, Wallingford

Project Background
In some parts of Seattle, sewage and stormwater (rain) share a set of pipes; this is called a combined sewer. During heavy rains the water often exceeds the pipes' capacity (known as an overflow to us sewer nerds), sending untreated sewage (yep that means poop) and stormwater into the Ship Canal. These overflows can harm fish, wildlife, and the environment, and can contain pollution.

During a heavy storm, the new tunnel will capture and temporarily store more than 29 million gallons of untreated stormwater and sewage until the treatment plant is ready for it. The tunnel will improve water quality regionally by keeping more than 75 million gallons of polluted stormwater (from rain) and sewage on average each year from flowing into the Lake Washington Ship Canal, Salmon Bay, and Lake Union. Based on data from the last five years, the Ship Canal Water Quality Project would have removed about 70% of SPU's total combined sewer overflow volume.

Investing in Puget Sound's health and the Region's future
Want to know more? Visit our website and sign up for our email list at shipcanal.participateonline.com.

August 2022

Factsheets

Ship Canal WATER QUALITY PROJECT

Tunnel Boring Machine Coloring Sheet

I'll be digging out 400,000 tons of dirt – that's the weight of about 60,000 elephants!

I'm connecting Queen Anne to the larger tunnel!

Our smaller Tunnel Boring Machine will be digging this tunnel!

Coloring sheets

Ship Canal WATER QUALITY PROJECT

Meet MudHoney!

Illustrations

MudHoney, the 18-ft diameter tunnel boring machine, completed its journey from Ballard to Wallingford in June 2023!

Ballard, East Ballard, Fremont, Wallingford

Animated gif schedule

MudHoney, the 18-ft diameter tunnel boring machine, completed its journey from Ballard to Wallingford in June 2023!

Ballard, East Ballard, Fremont, Wallingford